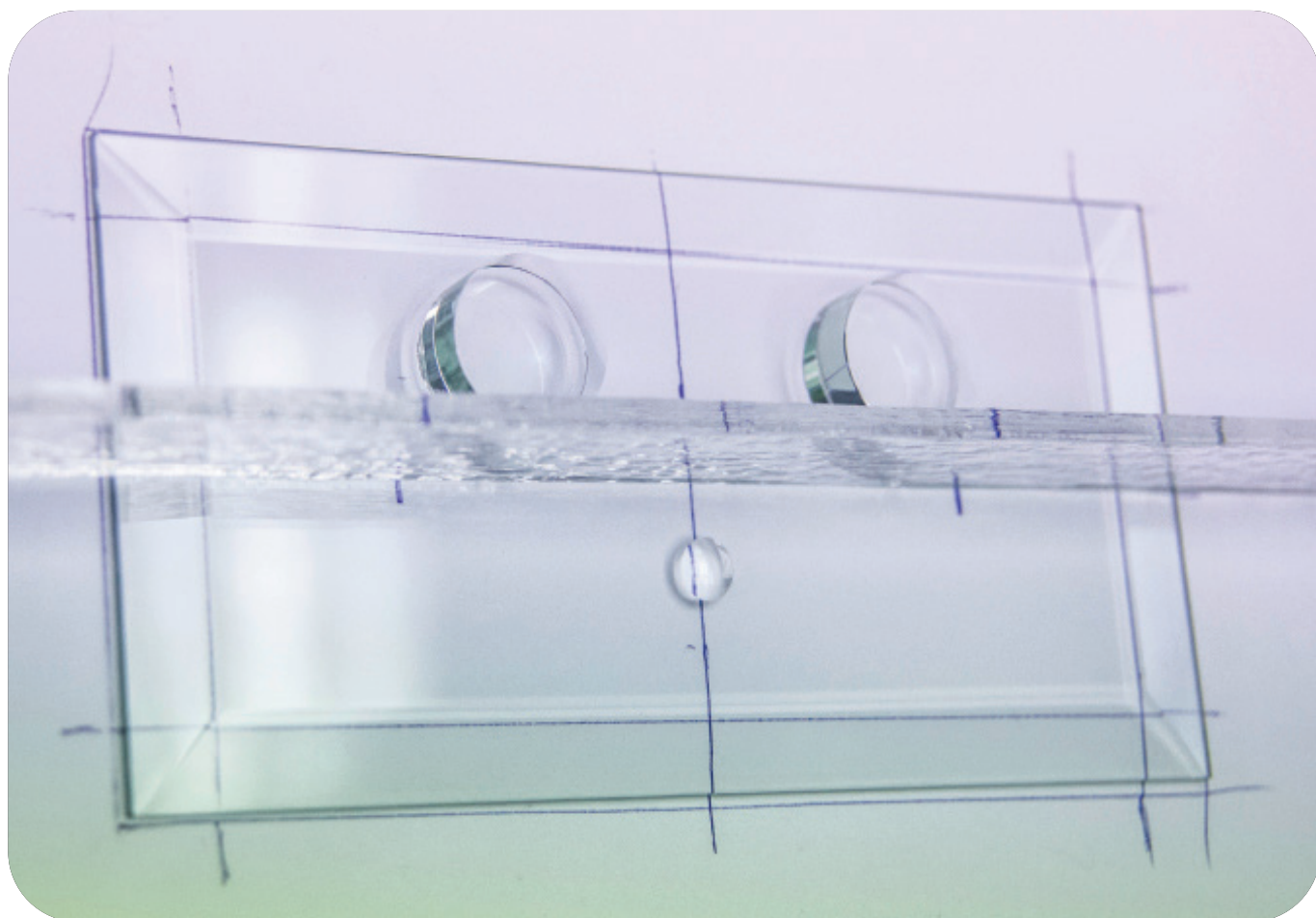


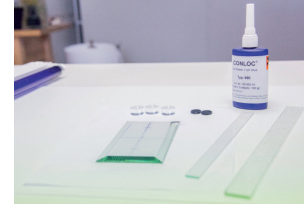
THE GLASS BASE



MATERIAL:

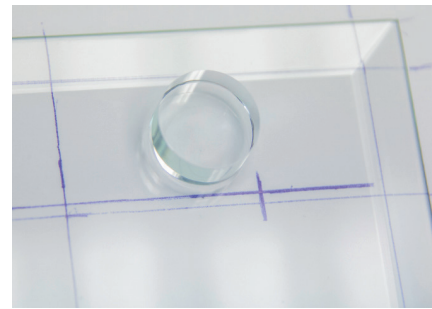
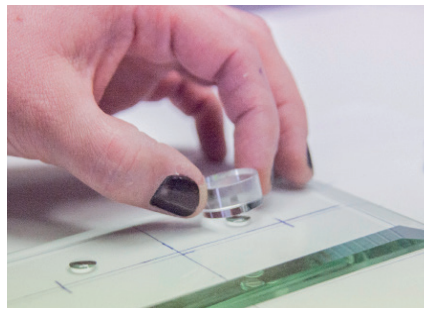
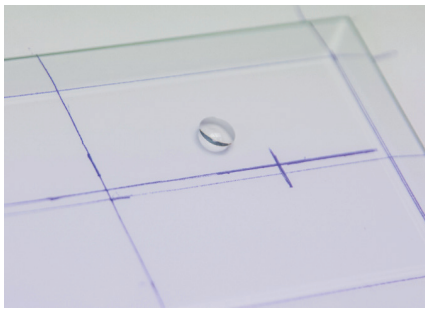
bevels
 glass discs borosilicate
 UV- glue
 UV- lamp
 bumper

art.8514006
 art 4597000
 art 5096010
 art 5098400
 art 6017210



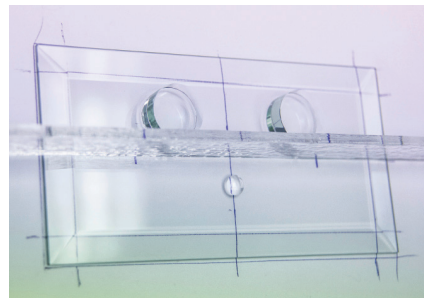
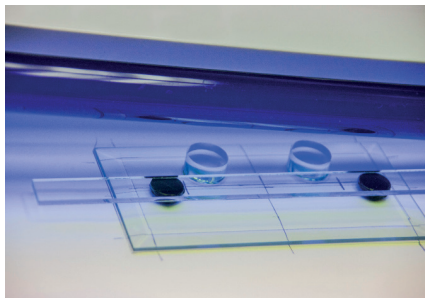
Clean bevel and glass discs very well. For glueing they must be fat and dust free.

Make a sketch of the bevel and mark the places for the discs. Now you can lay down the bevels onto the sketch and drop a little bit of the UV- glue to the marked places. Carefully place the blanks obliquely on the bevel and lower them down slowly. This is to avoid air traps in the adhesive.

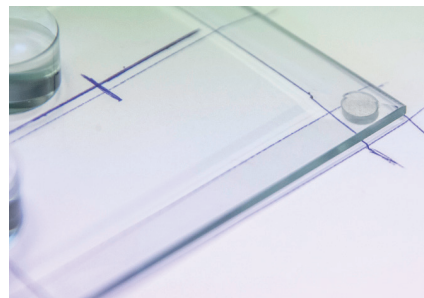
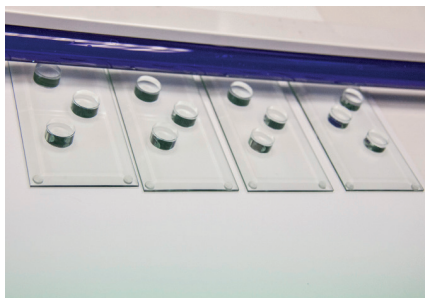


Illuminate the glue with the UV lamp for about 30 -60 seconds. Then remove the excess glue. Now you can glue the front disc.

Tip: So that you have no problem with the distances, it is advisable to keep a piece of glass between the back discs and the front disc.



Remove excess glue from the front disc and illuminate the glued discs again for 3-4 minutes.



Now you clean the bottom and stick a bumper in every edge.

And ready is your glass base!

Example with facet 3 x 6" Art. 8514006

